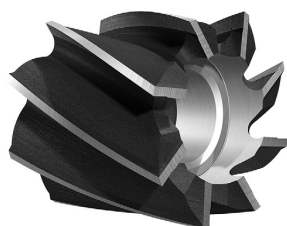


**Fresa de topo para mandril, chaveta longitudinal, corte à direita e hélice à direita.**  
 Shell end mill with standard keyway, right hand cut and right hand helix.



**1021**



**1021**

d1 js 16 mm	b js 16 mm	d2 H7 mm	Z
30	30	13	6
35	35	16	6
40	20	16	8
40	40	16	8
50	25	22	8
50	50	22	8
60	30	27	8
60	60	27	8
75	35	27	10
75	75	27	10
90	35	27	10
110	35	32	10
130	35	40	12
150	40	40	14

**1022**

d1 js 16 mm	b js 16 mm	d2 H7 mm	Z
30	30	13	10
35	35	16	10
40	20	16	10
40	40	16	10
50	25	22	12
50	50	22	12
60	30	27	14
60	60	27	14
75	35	27	16
75	75	27	16
90	35	27	18
110	35	32	20
130	35	40	22
150	40	40	24



**1022**

