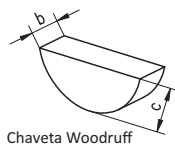
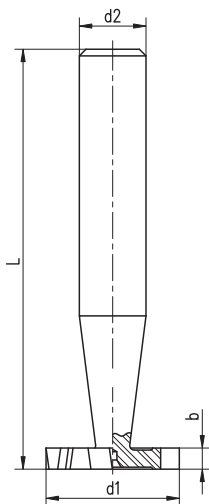
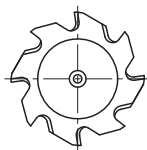


Fresa para rasgo de chaveta WOODRUFF, haste cilíndrica, corte à direita, dentes cruzados.
 WOODRUFF drive slot cutter, straight shank, right hand cut, staggered teeth.



1641



A fresa pode ser definida pela especificação da chaveta ou pelo $\varnothing d1$ e espessura b

d1	b	L	d2	Z	Especif. da chaveta (b x c) mm
h11 mm	e8 mm	mm	h8 mm		
10,5	2	50	6	6	2 x 3,7
10,5	2,5	50	6	6	2,5 x 3,7
10,5	3	50	6	6	3 x 3,7
13,5	2	56	10	8	2 x 5
13,5	3	56	10	8	3 x 5
13,5	4	56	10	8	4 x 5
16,5	3	56	10	8	3 x 6,5
16,5	4	56	10	8	4 x 6,5
16,5	5	56	10	8	5 x 6,5
19,5	3	63	10	8	3 x 7,5
19,5	4	63	10	8	4 x 7,5
19,5	5	63	10	8	5 x 7,5
19,5	6	63	10	8	6 x 7,5
22,5	3	63	10	10	3 x 9
22,5	4	63	10	10	4 x 9
22,5	5	63	10	10	5 x 9
22,5	6	63	10	10	6 x 9
22,5	7	63	10	10	7 x 9
22,5	8	63	10	10	8 x 9
25,5	4	63	10	10	4 x 10
25,5	5	63	10	10	5 x 10
25,5	6	63	10	10	6 x 10
25,5	7	63	10	10	7 x 10
28,5	6	63	10	10	6 x 11
28,5	7	63	10	10	7 x 11
28,5	8	63	10	10	8 x 11
28,5	10	71	12	10	10 x 11
32,5	6	71	12	10	6 x 13
32,5	7	71	12	10	7 x 13
32,5	8	71	12	10	8 x 13
32,5	10	71	12	10	10 x 13
38,5	6	71	12	12	6 x 15
38,5	8	71	12	12	8 x 15
45,5	10	71	12	12	10 x 16

d1	b	L	d2	Z
h11 pol	e8 pol	pol	h8 pol	
1/2	3/32	2	3/8	6
1/2	1/8	2	3/8	6
5/8	3/32	2 1/4	3/8	8
5/8	1/8	2 1/4	3/8	8
5/8	5/32	2 1/4	3/8	8
3/4	1/8	2 1/2	1/2	8
3/4	5/32	2 1/2	1/2	8
3/4	3/16	2 1/2	1/2	8
3/4	1/4	2 1/2	1/2	8
7/8	5/32	2 1/2	1/2	8
7/8	3/16	2 1/2	1/2	10
7/8	7/32	2 1/2	1/2	10
7/8	1/4	2 1/2	1/2	10
1	3/16	2 1/2	1/2	10
1	7/32	2 1/2	1/2	10
1	1/4	2 1/2	1/2	10
1	5/16	2 1/2	1/2	10
1 1/8	3/16	2 1/2	1/2	10
1 1/8	7/32	2 1/2	1/2	10
1 1/8	1/4	2 1/2	1/2	10
1 1/8	5/16	2 1/2	1/2	10
1 1/4	3/16	2 13/16	1/2	10
1 1/4	7/32	2 13/16	1/2	10
1 1/4	1/4	2 13/16	1/2	10
1 1/4	5/16	2 13/16	1/2	10
1 1/4	3/8	2 13/16	1/2	10
1 3/8	1/4	2 13/16	1/2	12
1 3/8	5/16	2 13/16	1/2	12
1 3/8	3/8	2 13/16	1/2	12
1 1/2	1/4	2 13/16	1/2	12
1 1/2	5/16	2 13/16	1/2	12
1 1/2	3/8	2 13/16	1/2	12

Dados de corte, ver página 133